

2009 CRIME STATISTICS



PRINCE WILLIAM COUNTY POLICE DEPARTMENT



-Page intentionally left blank-

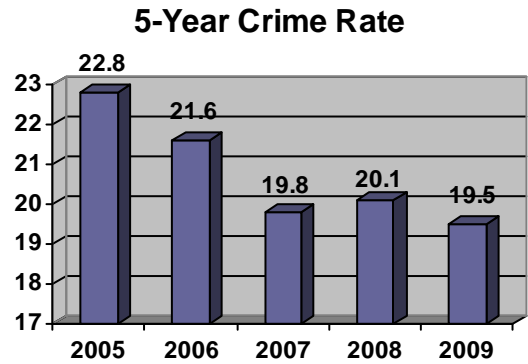
TABLE OF CONTENTS

Overview.....	4
At-a-Glance	5
Part I Crime	6
Person vs. Property Crime.....	6
Crime Rate	7
Historical Crime Rate	8
Closure Rates.....	9
Murders	10
Violent Crime.....	11
Crimes Against Property.....	12
Arrest Data, All Crimes	13
Arrest Data, Part I Crimes.....	13
Arrest Data, Other Offenses	14
Illegal Immigration Enforcement	15
Illegal Alien Data, All Criminal Arrests....	16
Illegal Alien Arrests, Part I Crimes.....	16
Illegal Alien Arrests, Other Offenses.....	17
Traffic Enforcement.....	18

OVERVIEW

Year-End 2009 Crime Statistics

Police Chief Charlie T. Deane announces a 1.9% decrease in the number of Part I crimes. The 2009 overall crime rate (the number of crimes per 1,000 residents) of 19.5 represents a fifteen year low.



Uniform Crime Reporting (UCR) statistics for 2009, as compared to 2008 show:

- ◆ Overall Part I Crime decreased by 1.9%
- ◆ After a 21.8% decrease in total reported Violent Crimes in 2008, reports of Violent Crimes increased in 2009 by 10.9%.
- ◆ Part I reported Property Crimes decreased by 2.7%.
- ◆ The closure rate for violent crime (58.6%) is well above the 2008 national average of 45.1%. *National figures for 2009 are not yet available.*

Reports of Part I Crimes Decreased by 1.9%

- ◇ Murder: Decreased by 16.6% (from 12 to 10)
- ◇ Rape: Increased by 103.6% (from 28 to 57) *
- ◇ Robbery: Increased by 2.8% (from 248 to 255)
- ◇ Aggravated Assault: Increased by 9.6% (from 197 to 216)
- ◇ Burglary: Decreased by 6.2% (from 1,049 to 984)
- ◇ Larceny: Decreased by 0.2% (from 5,645 to 5,634)
- ◇ Motor Vehicle Theft: Decreased by 20.2% (from 618 to 493)

**18 of the reported rapes occurred in years prior to 2009.
Two of the reported offenders were not known to their victim.
All of the remaining offenders were acquainted with or related to the victim.*

ALL CRIMINAL ARRESTS Legally Present vs. Illegal Aliens



Legally Present Arrestees
 Illegal Aliens Arrested

Illegal Immigration Enforcement Arrest Data

Data pertaining to contacts with and arrests of illegal aliens may be found on pages 15-17 of this report. 2009 is the first year data exists for a full 12-month period.

AT-A-GLANCE

The crime rate in Prince William County, the ratio of the total number of crimes per 1,000 population, decreased from the previous year. While violent crime increased for the first time in three years, it continues to represent a small portion of the total crime in the County. Crimes against property constitute 93% of the total crime.

Crime statistics in Prince William County are tracked in accordance with the national standards administered by the Federal Bureau of Investigation's (FBI) Uniform Crime Reporting (UCR) program. The program's main objective is to generate a reliable set of criminal statistics for use in law enforcement.

Part I offenses include murder, rape, robbery, aggravated assault, burglary, larceny and motor vehicle theft.

Part II offenses encompass nineteen additional types of crime ranging from simple assault to fraud and disorderly conduct.

Of note:

- ◆ Murders
10 murders occurred in Prince William County in 2009. One remains under active investigation.
- ◆ Violent Crime
Although 2009 reports of Violent Crime increased by 10.9% after a 21.8% decrease in 2008, they remain lower than the average for the past five years.

At-a-Glance	2008	2009
County population	388,269	392,900
Calls for service	238,651	238,376
Total Part I crimes	7,797	7,649
Crime rate	20.1	19.5
Criminal arrests (adult & juvenile)	14,408	14,307
Criminal adult arrests	12,722	12,839
Criminal juvenile arrests	1,686	1,468
Total traffic citations	38,917	40,931
Traffic crash investigations	4,363	4,495
Total fatal traffic victims	23	18

Closure Rates	PWC 2008	National 2008*	PWC 2009	National 2009*
Violent Crime	60.2%	45.1%	58.6%	N/A
Property Crime	22.3%	17.4%	22.7%	N/A

*Source: *Crime in the United States 2008* Department of Justice. National figures for 2009 have not been released.

PART I CRIME

In 2009, Part I Crimes in Prince William County decreased by 1.9%. As defined by the FBI's UCR program, Part I crimes include murder, rape, robbery, aggravated assault, burglary, larceny and motor vehicle theft. It should be noted that crime statistics must be

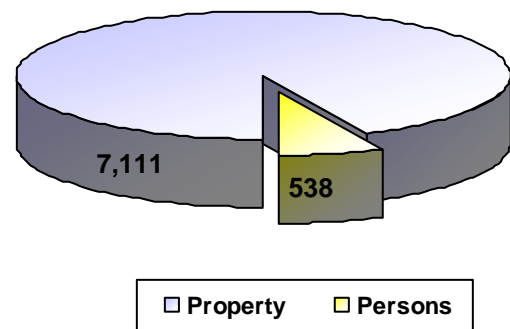
viewed in context with environmental influences. Factors such as changes in reporting rates, demographics, the economy, the law, and changes in police policies and resources, can all have an influence on the number of reported crimes. It is also important to consider crime trends over multiple years.

Crimes Against Persons	2008	2009	Change	% Change
Murder	12	10	(2)	(16.6%)
Rape	28	57	29	103.6%
Robbery	248	255	7	2.8%
Aggravated Assault	197	216	19	9.6%
Total Crimes Against Persons	485	538	53	10.9%
Crimes Against Property	2008	2009	Change	% Change
Burglary	1,049	984	(65)	(6.2%)
Larceny	5,645	5,634	(11)	(0.2%)
Motor Vehicle Theft	618	493	(125)	(20.2%)
Total Crimes Against Property	7,312	7,111	(201)	(2.7%)
TOTAL PART I CRIMES	7,797	7,649	(148)	(1.9%)

PERSON VS. PROPERTY CRIME

Part I offenses are further classified into crimes against persons (murder, rape, robbery, and aggravated assault), and crimes against property (burglary, larceny, and motor vehicle theft).

Property crimes make up 93% of all reported index crimes in Prince William County. Violent crimes constitute only 7% of index crimes.



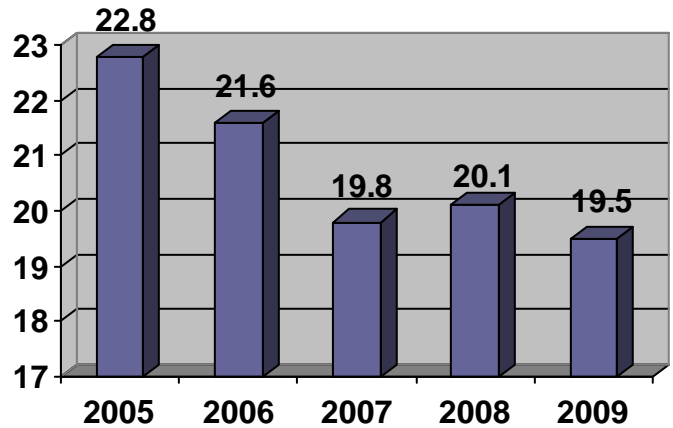
CRIME RATE

The crime rate in Prince William County decreased to 19.5 crimes per 1,000 residents in 2009. This ratio represents a fifteen year low in Prince William County (see chart on page 8). The crime rate is intended to serve as a basic indicator of overall crime trends and is a commonly accepted community measure.

It should be noted the crime rate is based on the incidence of Part I (or "Index") Crimes only. Index Crimes include: murder, rape, robbery, aggravated assault, burglary, larceny, and motor vehicle theft. Furthermore, Uniform Crime Reporting standards dictate that only the most serious offense in a multiple-offense incident be counted.

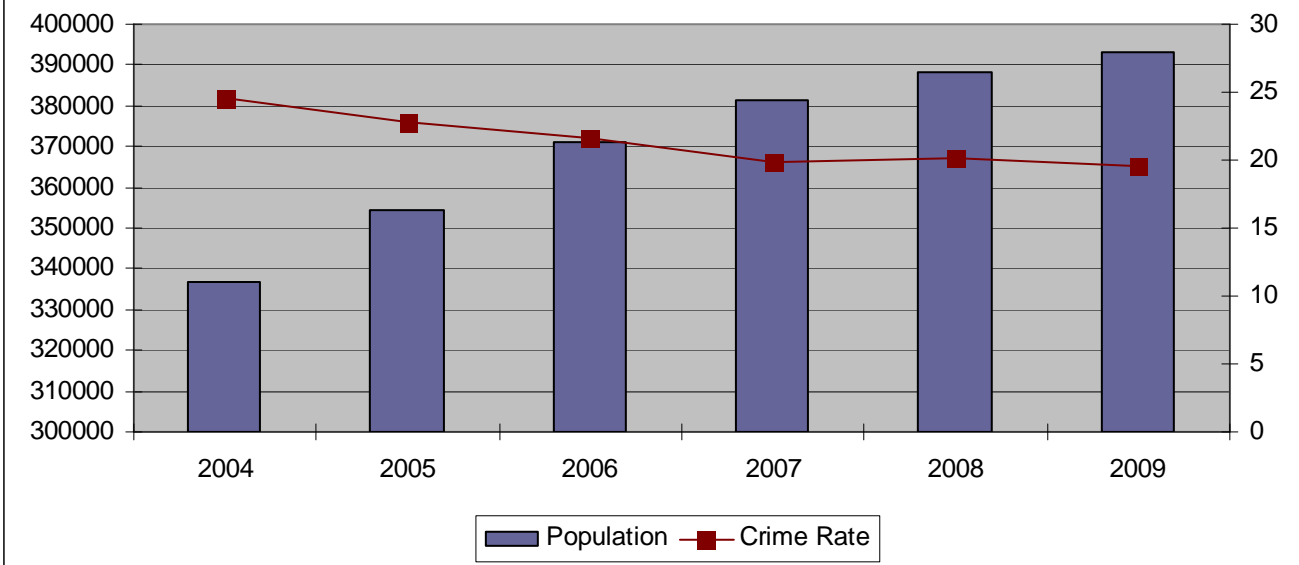
Because the crime rate is based on certain reported crimes only, it is not a comprehensive tracking of all crime. For a broader perspective, the arrest data for a more extensive catalog of crimes is presented on page 14.

5-Year Crime Rate



The total number of Part I crimes in Prince William County decreased from 7,797 in 2008 to 7,649 in 2009. This represents a 1.9% decline.

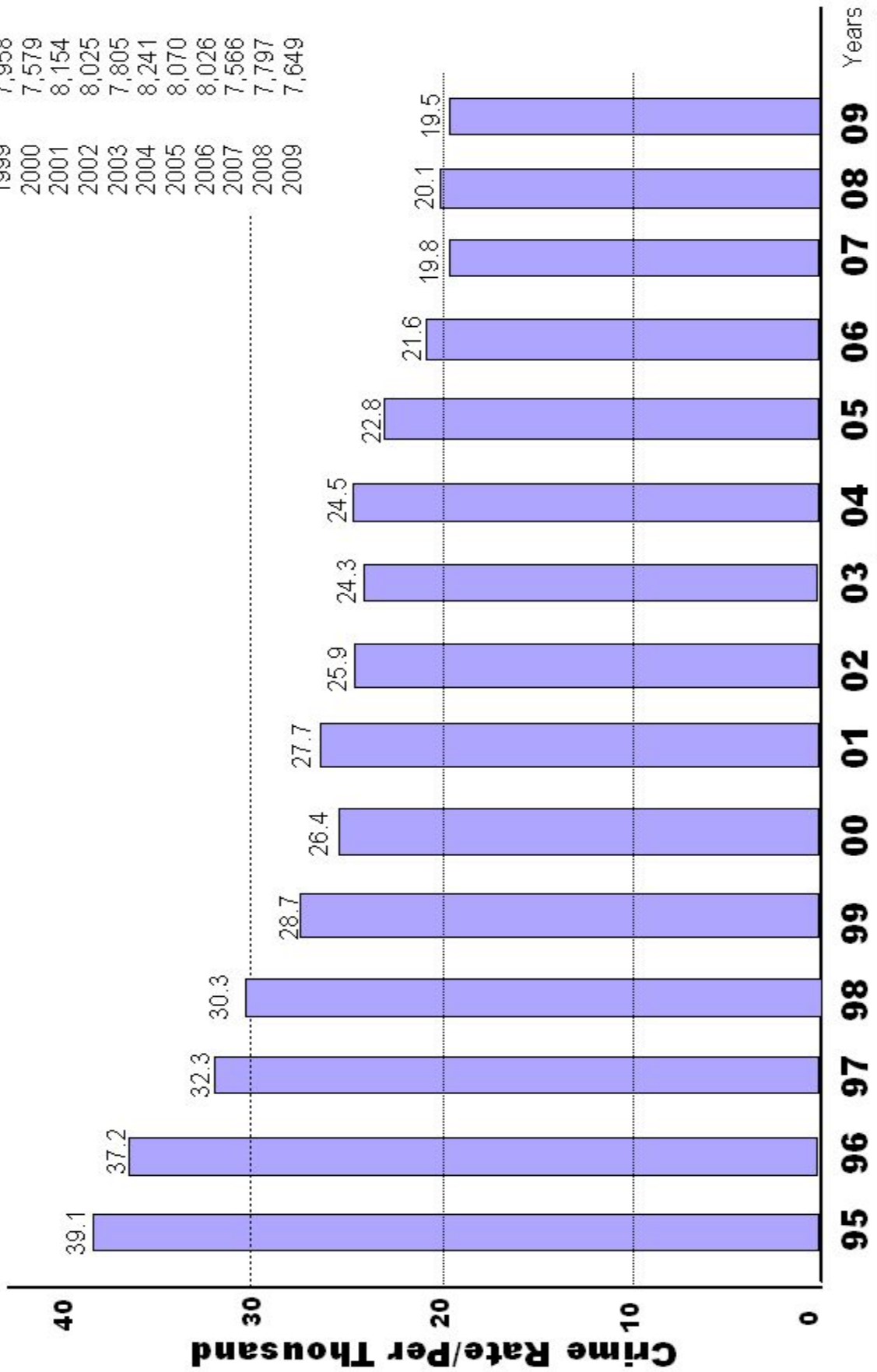
CRIME RATE AND POPULATION



Prince William County Police Department

Crime Rate Per Thousand Residents

1995 - 2009



Prepared by P/W C Police Department, Office of the Chief, GIS Section

CLOSURE RATES

Within the UCR program, law enforcement can “close” offenses either by arrest or by exceptional means. A case is cleared by arrest when all three of the following conditions are met for at least one person:

- Arrested
- Charged with the offense, and
- Turned over to the court for prosecution.

A case is cleared by exceptional means when there are elements beyond law enforcement’s control that prevent the agency from arresting and formally charging the offender.

It is important to note that the number of offenses cleared is different than the number of persons arrested. For example, the arrest of one person may clear several crimes, yet the arrest of many persons may clear only one offense. Also, some clearances that are recorded in a certain calendar year may pertain to offenses that occurred in prior years.

The closure rate for violent crime (58.6%) is well above the 2008 national average of 45.1%. National figures for 2009 are not yet available.

2009 Closure Rates

Crimes Against Persons	Actual	Cleared	Closure Rate
Murder	10	9	90%
Rape	57	48	84.2%
Robbery	255	82	32.2%
Aggravated Assault	216	176	81.5%
Total Crimes Against Persons	538	315	58.6%
Crimes Against Property	Actual	Cleared	Closure Rate
Burglary	984	235	23.9%
Larceny	5,634	1,280	22.7%
Motor Vehicle Theft	493	98	19.9%
Total Crimes Against Property	7,111	1,613	22.7%

2008 Closure Rates

Crimes Against Persons	Actual	Cleared	Closure Rate
Murder	12	15*	125.0%
Rape	28	26	92.9%
Robbery	248	90	36.3%
Aggravated Assault	197	161	81.7%
Total Crimes Against Persons	485	292	60.2%
Crimes Against Property	Actual	Cleared	Closure Rate
Burglary	1,049	304	29.0%
Larceny	5,645	1,193	21.1%
Motor Vehicle Theft	618	135	21.8%
Total Crimes Against Property	7,312	1,632	22.3%

**Includes murders that occurred in prior years, but were solved in 2008.*

Historical Perspective

MURDERS

Murders are the highest profile of the violent crimes. The UCR program defines murder as the willful (non-negligent) killing of one human being by another. The classification of this offense is based solely on police investigation as opposed to the determination of a court, medical examiner, coroner, or jury. This classification does not include deaths caused by negligence, suicide, or accident; justifiable homicides; and attempts to murder or assaults to murder, which are scored as aggravated assaults.

As illustrated by the chart below, the number of murders in Prince William County has varied significantly from year to year, and has not followed a predictable pattern. The analysis of individual cases also does not reveal any indicators that can be directly correlated to the number of murders, or their causes.

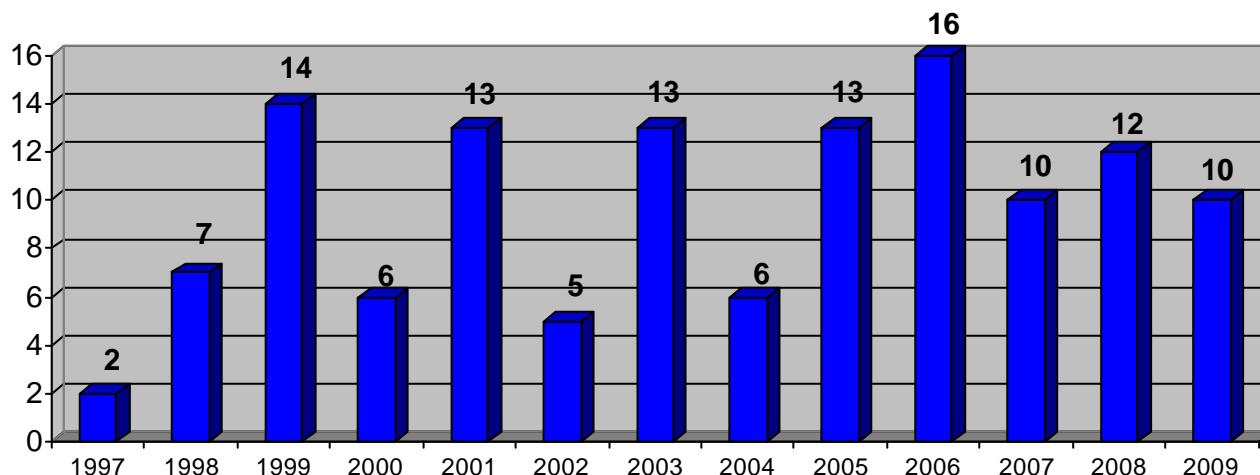
In 2009, 10 murders occurred in Prince William County. In one case, the adult male victim was beaten, stabbed and left to die in the woods. This is the only case that remains under active investigation; all others have been solved.

Also during 2009, a missing person from 2001 was discovered to have been a victim of murder that year; this case has been solved.

In 2009, there were 7 separate murder incidents that resulted in a total of 10 deaths.

- ◆ *One domestic incident resulted in the murder of 3 family members.*
- ◆ *Four deaths are attributed to altercations between acquaintances. Two of these deaths occurred during a single incident.*
- ◆ *One incident involved the killing of a child by a parent.*
- ◆ *In one of the incidents, the murderer also killed himself (murder/suicide).*
- ◆ *One death is believed to be the result of a violent assault. This case remains unsolved.*

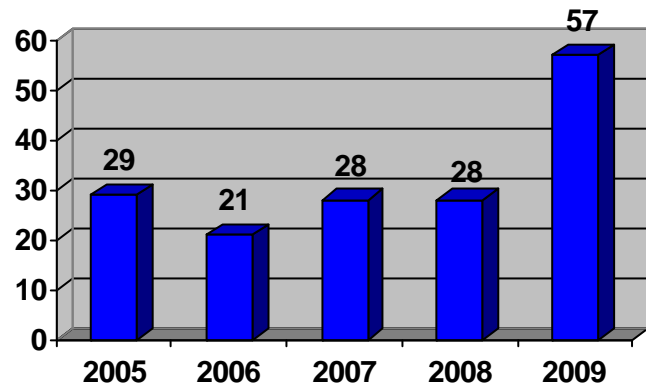
Murders 1997 - 2009



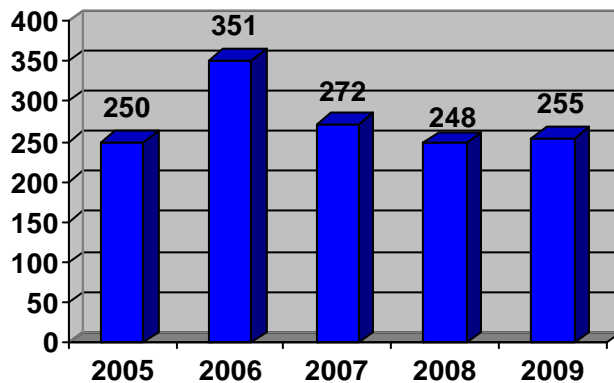
Historical Perspective
VIOLENT CRIMES

RAPE

In comparison to recent years, the number of rapes reported in 2009 increased significantly. Eighteen (31.6%) of these rapes actually occurred in years prior to 2009. All but three of the victims were related to or acquainted with the offender. One victim was raped by an unknown assailant inside her residence. In another single incident, two victims were raped by a stranger. It has been confirmed that this suspect, who remains at-large, has committed other rapes outside of PWC.



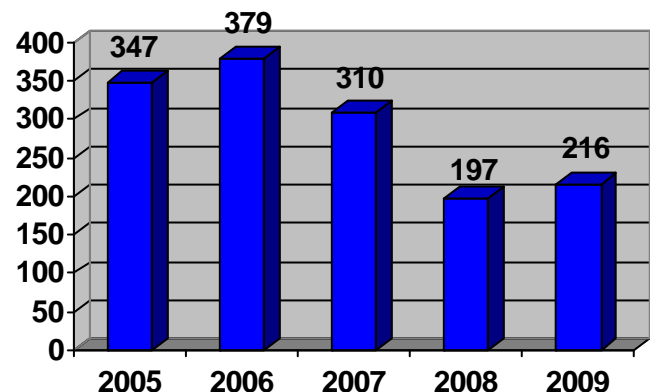
ROBBERY



Of the 255 reported robberies in 2009, the majority (214) were non-business or “street robberies.” The Department continues to battle street robberies by using the robbery suppression initiative it began in 2006. Although there was a slight increase in 2009, the number of robberies remain significantly lower than the numbers in 2006 or 2007. Six bank robberies occurred in 2009, reflecting a 40% decrease from the ten that occurred in 2008.

AGGRAVATED ASSAULT

There were 216 aggravated assaults in 2009, which resulted in 147 adult arrests and 28 juvenile arrests. 5.6% (12) of the reported incidents involved the display or use of a firearm, and 31.5% (68) involved a knife or other cutting instrument.

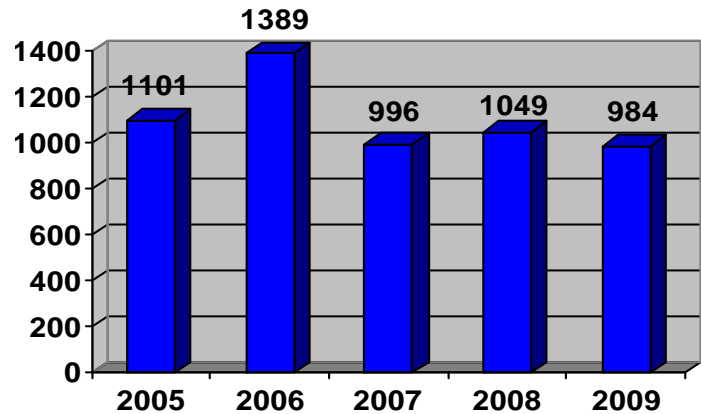


Historical Perspective

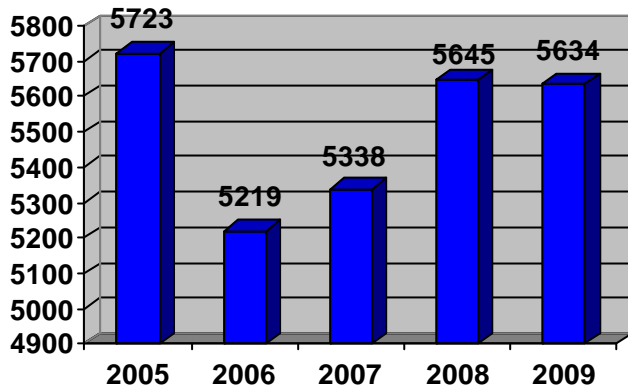
CRIMES AGAINST PROPERTY

BURGLARY

The number of all reported burglaries dropped this past year by 6.2% with residential burglaries dropping 7.9%. Of the 984 reported incidents, 828 were residential burglaries, and 156 were commercial burglaries. Patrol officers, detectives and crime analysts continue to employ targeted and highly coordinated efforts towards the successful closure of these cases.



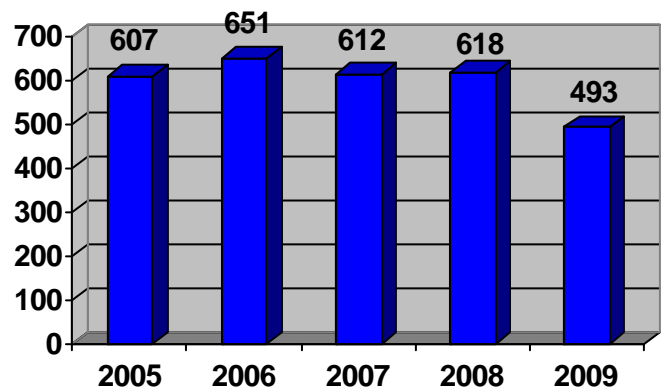
LARCENY



Overall larcenies reflected a slight decrease this year, dropping from 5,645 in 2008 to 5,634 in 2009. There were 288 copper/metal thefts in 2008; 69 in 2009. The reduced value of metals is believed to have contributed to the resulting 76% decrease in larcenies of copper and other metals during 2009. Larceny makes up 79% of the total crimes against property.

MOTOR VEHICLE THEFT

Auto thefts dropped 20.2%, representing a significant decrease. Similar to above, it is believed the declining value of metal has also resulted in the reduced theft of older cars because the practice of scrapping cars is less lucrative. Widespread availability of sophisticated anti-theft technology has contributed to the reduced incidence of theft for newer model vehicles.

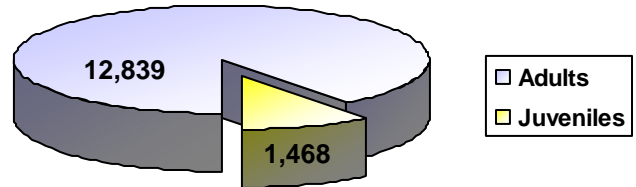


ARRESTS – All Crimes

The table at the bottom of this page contains data pertaining to arrests for Part I crimes. For crimes other than those designated as Part I, arrest data may be found on page 14.

The chart to the right and the accompanying table reflect the number of persons arrested for all crimes that are tracked by the UCR, separated by adults and juveniles.

Adult vs. Juvenile Arrests



Arrests Totals (All Crime Offenses)	2008	% of 2008 Total	2009	% of 2009 Total
Adult Only	12,722	88.3%	12,839	89.7%
Juvenile Only	1,686	11.7%	1,468	10.3%
Adult and Juvenile Combined	14,408	—	14,307	—

ARRESTS – Part I Crimes

The UCR program counts one arrest for each separate occasion a person is cited, arrested, or summoned for an offense. Because a person may be arrested multiple times during the year, the

UCR arrest figures do not reflect the number of individual people who have been arrested. Rather, the data shows the number of times arrests have been made for a particular offense.

Arrests (Part I Crimes)	Adult			Juvenile			Total (Adult & Juv)	
	2008	2009	Change	2008	2009	Change	2008	2009
Murder	20	12	(8)	2	0	(2)	22	12
Rape	18	31	13	5	6	1	23	37
Robbery	92	97	5	18	20	2	110	117
Aggravated Assault	125	147	22	13	28	15	138	175
Burglary	174	134	(40)	67	57	(10)	241	191
Larceny	1,044	1,255	211	166	212	46	1,210	1,467
Motor Vehicle Theft	40	49	9	18	5	(13)	58	54
Total	1,513	1,725	212	289	328	39	1,802	2,053

ARRESTS – Other Offenses

Note: Not every crime classification is listed individually.

Arrests	Adult			Juvenile			Total (Adult & Juv)	
	2008	2009	Change	2008	2009	Change	2008	2009
Assaults (Other than Aggravated)	1,331	1,509	178	282	255	(27)	1,613	1,764
Arson	8	9	1	2	0	(2)	10	9
Forgery & Counterfeiting	151	148	(3)	8	2	(6)	159	150
Fraud	328	373	45	13	8	(5)	341	381
Embezzlement	171	173	2	8	0	(8)	179	173
Stolen Property—Buy/ Possess/Receive	61	57	(4)	19	9	(10)	80	66
Vandalism	185	159	(26)	57	62	5	242	221
Weapons	158	155	(3)	36	21	(15)	194	176
Prostitution/Common Vice	41	55	14	1	0	(1)	42	55
Sex Offenses (Other)	92	120	28	13	12	(1)	105	132
Sale/Manufacture Drugs	282	344	62	11	14	3	293	358
Drug Possession	1,292	1,290	(2)	133	119	(14)	1,425	1,409
Gambling (All offenses)	3	13	10	0	0	0	3	13
Family/Children Offenses	19	25	6	1	0	(1)	26	25
DUI	2,181	2,116	(65)	18	22	4	2,199	2,138
Liquor Laws	192	136	(56)	105	100	(5)	297	236
Public Drunkenness	1,581	1,306	(275)	61	59	(2)	1,642	1,365
Disorderly Conduct	412	330	(82)	96	56	(40)	508	386
All Other Offenses	2721	2796	75	533	401	(132)	3254	3,197

Traffic	2008*	2009	Change	-	-	-	2008*	2009
No Operator's License	1,223	2,085	862	**	**	**	1,223	2,085

* Data collection began in June 2008.

** Data is not compiled separately for adults and juveniles. See "Adult" data for all persons charged.

ILLEGAL IMMIGRATION ENFORCEMENT

At the direction of the Board of County Supervisors, the Prince William County Police Department actively enforces a local immigration enforcement policy. All sworn officers and relevant civilian staff have received training on this policy.

As of July 2008, the policy mandates inquiry into the citizenship / immigration status of all persons taken into physical custodial arrest for a violation of state or local law. While remaining in accord with the law and sound policing practices, officers retain discretion to make an immigration status inquiry prior to physical custodial arrest.

The Police Department is committed to enforcing the policy in a fair, lawful and reasonable manner.

- We will focus on illegal aliens who commit violations of state or local law.
- We will protect crime victims and cooperative witnesses regardless of their immigration status.
- We will not tolerate racial profiling.

A comprehensive evaluation of the impact of the policy has been underway since 2008. It is due to be complete in 2010.

2009 is the first year enforcement data exists for a full 12-month period; this data may be found on pages 16-17.

Contacts with Suspected Illegal Aliens

During 2009, 1197 suspected illegal aliens were charged with a violation of law.

> Physically arrested	1150
> Released on a summons	47

Total persons vs. illegal alien data

- Of all persons arrested or summonsed in Prince William County, 2.2% were determined to lack legal status.
- Overall, 6% of all criminal arrests were determined to be that of a person lacking legal status.
- In 2009, a total of 40,931 traffic charges were issued in PWC. It has been determined 255 of these infractions were committed by a person who lacked legal status. The following is a partial breakdown of these charges:

> No Operator's License	205
> Hit & Run	20
> Reckless Driving	18

Misdemeanor vs. Felony

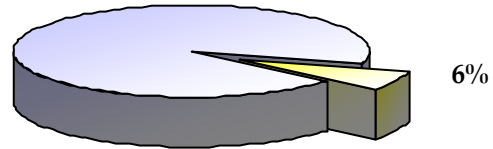
- 87.5% of those suspected to be illegal aliens were arrested on misdemeanor or traffic charges.
- 8.6% of those suspected to be illegal aliens were arrested on felony charges.

ILLEGAL ALIEN ARRESTS – All Crimes

The table at the bottom of this page contains data pertaining to the arrest of Illegal Aliens for Part I crimes. For crimes other than those designated as Part I, arrest data may be found on page 17.

The chart to the right represents arrests for all crimes that are tracked by the UCR, showing the percentage of arrested persons determined to lack legal status.

ALL CRIMINAL ARRESTS
Legally Present vs. Illegal Aliens



ILLEGAL ALIEN ARRESTS – Part I Crimes

The table below provides a breakdown of the total number of persons arrested in Prince William County compared to those who were arrested and determined to lack legal status - for Part I offenses only. This chart does not include arrests for other crimes.

- ◆ Overall, a total of 121, or 6%, of the 2,053 arrested for Part I offenses in 2009 were determined to be illegal aliens.
- ◆ 98 of the 121 illegal aliens arrested for Part I offenses were charged with property crimes.

Total Persons Arrested vs. Suspected Illegal Aliens Arrested for Part I Crimes
January 2009 to December 2009

Part I Crimes	Total Persons Arrested	Illegal Aliens Arrested	% Illegal Aliens
Murder	12	0	0%
Rape	37	3	8%
Robbery	117	4	3%
Aggravated Assault	175	16	9%
Burglary	191	8	4%
Larceny	1,467	88	6%
Motor Vehicle Theft	54	2	4%
Total	2,053	121	6%

ILLEGAL ALIEN ARRESTS – *Other Offenses*

Note: Not every crime classification is listed individually.

Total Persons Arrested vs. Suspected Illegal Aliens Arrested for Other Offenses January 2009 to December 2009

Other Crimes	Total Persons Arrested	Illegal Aliens Arrested	% Illegal Aliens
Assaults (Other than Aggravated)	1,764	53	3%
Arson	9	1	11%
Forgery & Counterfeiting	150	7	5%
Fraud	381	48	13%
Embezzlement	173	3	2%
Stolen Property—Buy/Possess/Receive	66	2	3%
Vandalism	221	4	2%
Weapons	176	5	3%
Prostitution/Common Vice	55	15	27%
Sex Offenses (Other)	132	10	8%
Sale/Manufacture Drugs	358	1	0.3%
Drug Possession	1,409	27	2%
Gambling (All offenses)	13	0	0%
Family/Children Offenses	25	1	4%
DUI	2,138	286	13%
Liquor Laws	236	2	1%
Public Drunkenness	1,365	269	20%
Disorderly Conduct	386	7	2%
All Other Offenses	3,197	33	1%
Total	12,254	774	6%
Traffic	Total Persons Charged	Illegal Aliens Charged	% Illegal Aliens
No Operators License	2,085	205	10%
Reckless Driving	2,780	20	0.7 %
Hit and Run	191	18	9.4%

TRAFFIC ENFORCEMENT

Although there were 132 more reportable crashes in 2009 than in 2008, the crash rate decreased by 3.2% in 2009. The crash rate is based on the total number of Vehicle Miles Traveled (VMT) as reported by the County Department of Transportation.

In 2009, 18 people were killed in 17 separate motor vehicle traffic crashes that occurred on the roadways of Prince William County. Three of the fatal victims were on motorcycle.

There were 8 alcohol-related fatal crashes. In all of these crashes, at least one driver or pedestrian had a blood alcohol concentration (BAC) over the legal limit of .08 percent.

In 2009, 5 of the fatal crashes were attributed to speeding. This is a 17% decrease from the previous year.

18 individuals died as a result of traffic crashes in 2009.

Of the 18 fatal victims, five were pedestrians. All five pedestrians were determined to be at fault, or contributed significantly to the cause of the crash.

There was a 14.3 % increase in the number of alcohol-related fatal crashes.

There were no fatalities involving commercial motor vehicles in 2009. In contrast, there were 4 of these such fatalities in 2008 .

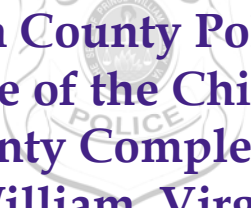
The Department continues to take aggressive measures to help increase the safety of the roadways. Despite unprecedented fiscal challenges in 2009, police staff were able to focus significant efforts toward reducing the rate of crashes and the underlying traffic violations that cause them, such as DUI, speeding, and commercial vehicle violations.

Crash Data	2008	2009	% Change
Total traffic crashes	4,363	4,495	3%
Total fatal crashes	22	17	(22.7%)
Total alcohol-related fatal crashes	7	8	14.3%
Total fatal victims	23	18	(21.7%)

Traffic Enforcement Data	2008	2009	% Change
Traffic citations	38,917	40,931	5.2%
DUI arrests	2,199	2,138	(2.8%)
No operators license	1,223*	2,085	70.5%
Speeding citations	14,120	14,737	4.4%
Speeding in a School Zone	1,105	1,157	4.7%
Seatbelt violations	1,264	1,312	3.8%
No child restraint	324	337	4%
Parking citations	22,396	23,998	7.2%
Commercial motor vehicle inspections	537 hours	641 hours	19.4%

**Data collection began in June 2008.*

-Page intentionally left blank-



**Prince William County Police Department
The Office of the Chief of Police
1 County Complex Court
Prince William, Virginia 22192**